



Ship repairs

HAROPA PORT has a comprehensive offer of ship repair services for all firms along the Seine Axis (both maritime or river operators) based around dedicated facilities and services.

Published on 26/06/2023 - Updated 21/03/2024

Ship repairs at Le Havre

The port possesses the following facilities:

- **The “Eure” dry docks:** three installations at the heart of the “old” port on the tidal basin, accessible around the clock via locks for ships up to 180m in length and 24m beam.
- **Quays for repairs afloat.**

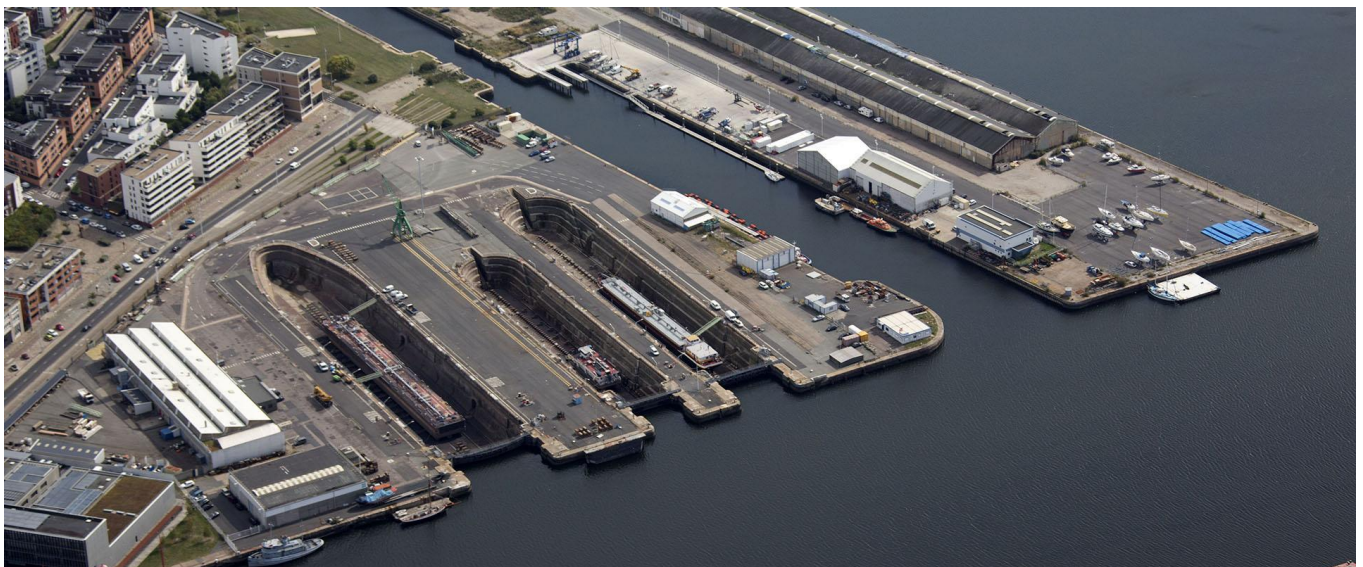
Associated services compliant with environmental standards:

- Know-how for the design of stranding berths able to accommodate all types of vessels and to ground them subject to the best terms, conditions and lead-times.
- Power supply (electricity).
- Freshwater supply.
- Hangar storage area at the dry docks.
- Lifting services with checks on load descents.

Customers and all service providers enjoy round-the-clock access to the facilities to conduct work on the relevant items.

This expertise allows the port to carry out the following work:

- dry repair services for ships and river craft (barges, self-propelled barges, pushers, river cruise boats, etc.) in one of the three Eure dry docks,
- civil engineering work in one of the three Eure dry docks,
- repairs afloat at the Seine Quay in one of the three Eure dry docks,
- repairs afloat, notably at Hermann du Pasquier and Jean Reinhart Quays on the inner port basin, and at Joannès Couvert Quay on the tidal basin.



©HAROPA PORT / DR

Bookings:

> **Repairs afloat:** bookings for berths at quay via the Harbourmaster's Office of HAROPA PORT | Le Havre.

> **For preparation of dry dock repairs (Eure dry docks):**

Bookings at the HAROPA PORT | Le Havre ship service operations centre.

Ship repairs at Rouen

HAROPA PORT | Rouen possesses its own **quayside ship repair facility (Quai des Armements)** at Croisset, located downstream from the city.

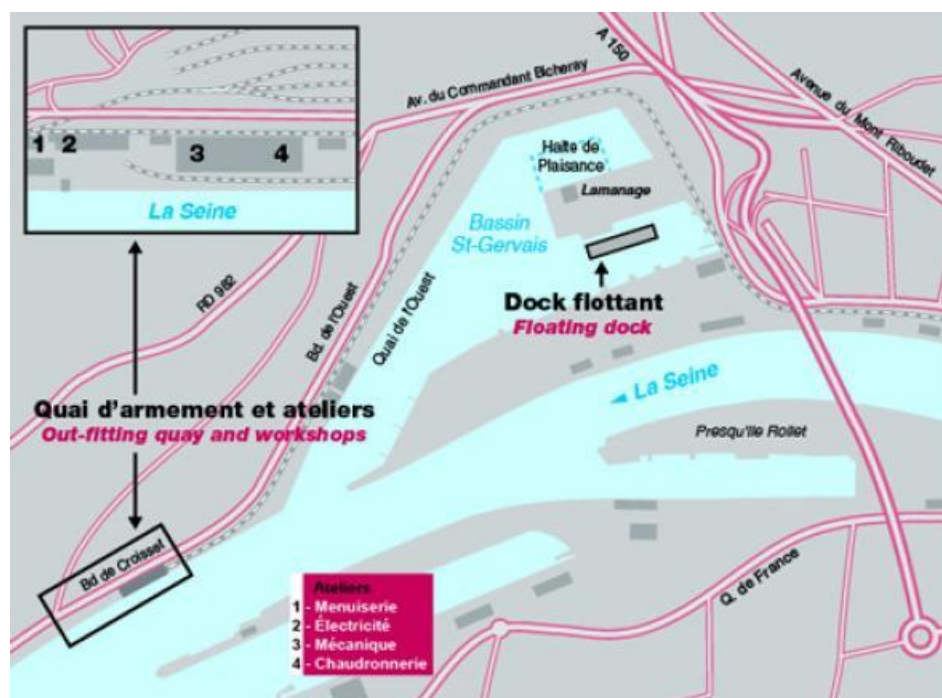
HAROPA PORT | Rouen is itself a dredger operator and can accommodate commercial requests from both internal and external customers (cruise operators, private companies based on the Seine Axis, tugs, pushers, private individuals, etc.)

A diverse range of facilities serving multiple areas of expertise:

The ship repair centre offers comprehensive and efficient services in four workshops served by a shipping line quay:

- **A mechanical shop**

Specialist mechanics are available to meet your needs: fitters, diesel engine specialists, motor mechanics, hydraulic specialists, line mechanics, machinists and supervisors.



©HAROPA PORT / DR

- **A boilermaking shop**

The whole range of skills involved in naval boilermaking can be applied here: boilermaking, metalwork, pipefitting, welding (our welders are qualified to EN 287-1 standard as approved by Bureau Veritas).

- **Electrical shop**

The personnel in this shop apply “merchant navy” rules and comply with the regulations laid down by Bureau Veritas and France’s Maritime and River Affairs Department. Specifically, they troubleshoot issues with electromechanical and automated systems.

- **Carpentry/Paint shop**

Our professionals work not only on ship carpentry (living quarters on board, floors, ceilings) but also on “landside” jobs (sundry premises).

The floating dock: a resource able to match a range of jobs:

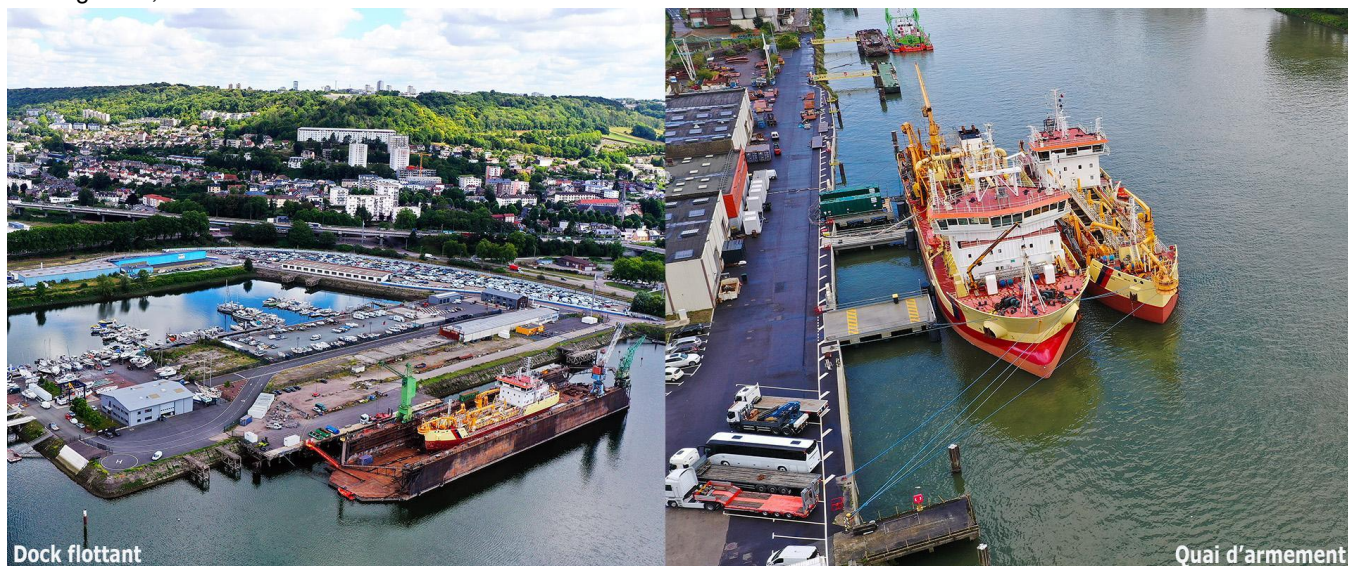
Covered by the port’s ISO 9001 certification, the floating dock can accommodate **ships up to 10,000 tonnes**. It will take vessels up to **140m in length** (e.g. dredgers, cruise boats), and can also allow maintenance work to be done on six smaller craft at the same time (e.g. pilot boats, pushers, launches, barges).

As many as **150 expert workers** may be on jobs there at any one time.

The port of Rouen recently acquired a new floating dock for use in ship maintenance. This new resource is **180m long and 37m wide** and is intended to allow the port to optimise its organisation and improve its competitiveness. It weighs **5,700 tonnes empty** and has a **lifting capacity of 10,000 tonnes**. Its priority uses are for the maintenance of the dredgers *Jean Ango* and *Daniel Laval*. It is scheduled to enter service in the summer of 2022.

Ideally located facilities:

Based in a port area sheltered from wind and equipped with a mobile tower crane, the **ship repair centre is based at the shipping line quay on the Boulevard de Croisset**, opposite the mechanical and boilermaking shops. As for the floating dock, this is located on the Saint Gervais basin.



©HAROPA PORT / JF Damois

Extra services:

Thanks to its network of subcontractors, the port can offer the services of specialist firms for:

- hull paintwork,
- scaffold erection,
- work on electronic and automated systems,
- lifeboat maintenance, etc.

Good to know: the organisation of the ship repair centre, which is part of the workshop and dredging department of HAROPA PORT | Rouen, has been awarded ISO 9001 certification for activities relating to ship and dredger maintenance, as well as repairs to industrial equipment.



71, quai Colbert, 76600 Le Havre

+33(2) 79 18 05 00