



FACTSHEET

On 1 January 2021, the United Kingdom leaves the European Union and becomes a third country.

- All goods either entering the European Union from the UK or entering the UK from the EU must be declared to customs and health, phytosanitary and/or veterinary products will be subject to transport authorisation requirements.
- The new procedures apply to all types of traffic, particularly vehicles using the ferry links.

This fact sheet concerns traffic using the ferry links between the United Kingdom and France.

I export/import health, phytosanitary and veterinary products - what do I have to do?

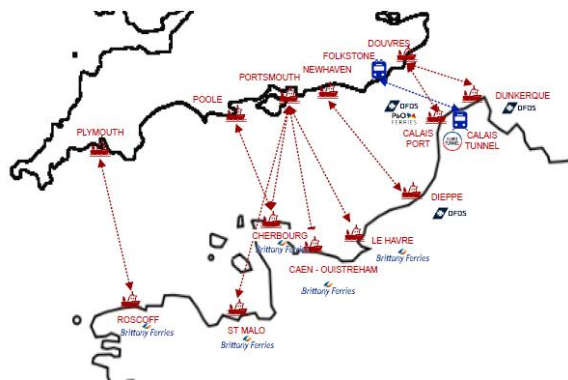


Get prepared & anticipate as much as possible

Get prepared

Find out

- o About the formalities for exporting and/or importing health, phytosanitary and veterinary products between France and the United Kingdom after 01/01/2021.
- o About the authorised ports of loading and unloading depending on the type of goods carried.





FACTSHEET

- Check that my goods are not "sensitive", prohibited or subject to restrictions.

Get help from external partners

- Contact registered customs representatives (RCRs) and/or representatives of the Ministry of Agriculture for my region (SIVEP), who will be able to inform me about the required procedures and formalities.

<https://agriculture.gouv.fr/le-brexit-et-les-contrôles-sanitaires-et-phytosanitaires>

<https://agriculture.gouv.fr/brexit>

Note: Complete the notification formalities myself if I am qualified to do so, otherwise a forwarding agent will be able to complete the formalities for me.

I export health, phytosanitary or veterinary products FR → UK

Exports: Calendar for the introduction of the new formalities

- **1st quarter - From 1 January 2021**
 - Certification required for:
 - Live animals and animal genetics
 - Plants requiring an EU PP (plant passport) (Est. declared to DRAFF/SRAL)
 - Establishment of "product certificates" for goods classed as "high risk" and "high priority"
- **2nd quarter - From 1 April 2021**
 - Establishment of certificates for:
 - FAO, animal feed and co-products (EU approved est.)
 - "Regulated" plants

** Awaiting information/comments concerning animal feed and co-products*
- **3rd quarter - From 1 July 2021**
 - Checks begin at the British border posts

Tools

Fact sheet "I export/import health products - what do I have to do?"

Last updated on 02/12/2020



FACTSHEET

- Certifications France
 - By the Official Veterinarian (OV) of the DDPP (Departmental Directorate for the Protection of the Population (for animals and food of animal origin) or the DRAF (Regional Directorate of Agriculture and Forestry) for plants. At least 48 h in advance
- Notification UK
 - APHA (Animal and Plant Health Agency - UK)

What is changing for exports

What is changing for exports to the United Kingdom

=>Pre-notification generalised as of 1 January 2021

=>TRACES: IPAFFS (**animals**) and PEACH (**plants**)

=>For all goods requiring certificates: obligatory notification of the APHA by the UK importer

=>Variable notification period

=>APHA => issues an UNN = unique notification number

=>UNN added to the certificate (**before signing**) or DOCOM

=>Wood packaging => ISPM15 requirements maintained




FACTSHEET

I import health, phytosanitary or veterinary products UK → FR

Imports: The procedure step by step


Prepare my import operation

STEP 1 – PREPARING TO IMPORT
OPERATOR INVOLVED: IMPORTER OF GOODS INTRODUCED BY FRANCE

 **MAKE CONTACT WITH THE BRITISH EXPORTER AND SUBMIT ALL THE FOLLOWING INFORMATION BEFORE ANY SHIPMENT**


THIS WILL AVOID BACKFLOW/DESTRUCTION OF GOODS DUE TO MAJOR NON-COMPLIANCES :


- INTRODUCTION OF PROHIBITED GOODS ;
- INTRODUCTION VIA A « NON-DESIGNATED FOR GOODS » POINT OF ENTRY ;
- MISSING CERTIFICATE OR INACCURATE HEALTH/PHYTOSANITARY CERTIFICATE FROM BRITISH AUTHORITIES ;
- UNSATISFACTORY HYGIENE CONDITIONS OF THE CONSIGNMENT ;


 **MINISTÈRE DE L'AGRICULTURE ET DE L'ALIMENTATION**

Check these points


STEP 2 – POINTS TO BE CHECKED BEFORE SHIPMENT OF GOODS
OPERATOR INVOLVED : BRITISH EXPORTER / FRENCH IMPORTER

 **IS THE GOOD SUBMITTED TO SANITARY OR PHYTOSANITARY CONTROLS ?**
=> LIVE ANIMALS, PRODUCTS OF ANIMAL ORIGIN, FEED, PLANTS

 **IS THE PRODUCT PROHIBITED TO BE IMPORTED ?**
EXAMPLES OF PROHIBITED PRODUCTS : POTATOES, CITRUS PLANTS AND VINES

 **FOR ANIMAL PRODUCTS: IS THE ESTABLISHMENT ALLOWED TO EXPORT THIS CATEGORY OF PRODUCT TO EUROPEAN UNION ?**

=> CHECK TRACES AND IMPADON WEBSITES

 **MINISTÈRE DE L'AGRICULTURE ET DE L'ALIMENTATION**



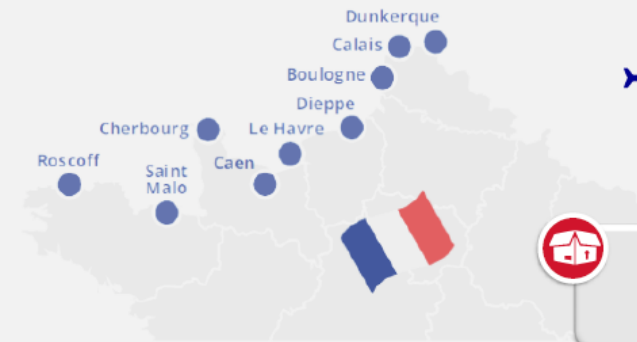
FACTSHEET

Choose my point of entry into France

STEP 3 – CHOOSING A POINT OF ENTRY IN FRANCE OPERATOR INVOLVED : BRITISH EXPORTER



CHECK THAT THE CHOSEN POINT OF ENTRY IS WELL DESIGNATED FOR THE RELATED GOOD



+ AIRPORTS WITH DESIGNATED BORDER CONTROL POSTS



ALL POINTS OF ENTRY ARE NOT DESIGNATED FOR ALL GOODS

MINISTÈRE DE L'AGRICULTURE ET DE L'ALIMENTATION

STEP 3 – CHOOSING A POINT OF ENTRY IN FRANCE OPERATOR INVOLVED : BRITISH EXPORTER



ALL « BREXIT » BORDER CONTROL POSTS ARE DESIGNATED FOR THE CONTROL OF ANIMAL PRODUCTS, FEED AND PLANTS

Certain categories of live animals

2 4 6 7 8

Specific case of Boulogne-sur-Mer, exclusively designated for fishery products and bivalve molluscs



NOTE THAT NONE OF THE FRENCH PORTS ARE APPROVED TO RECEIVE BOVINES, SHEEP, GOATS AND PIGS



MINISTÈRE DE L'AGRICULTURE ET DE L'ALIMENTATION



FACTSHEET

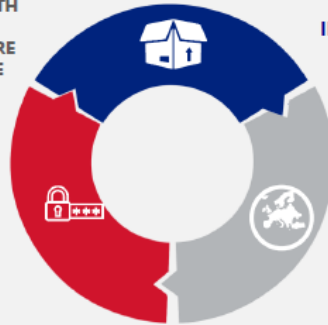
Get the British certification(s)

STEP 4 – HEALTH/PHYTOSANITARY CERTIFICATION BY OFFICIAL BRITISH AUTHORITIES OPERATOR INVOLVED : BRITISH EXPORTER



GRANTING AN HEALTH/PHYTOSANITARY CERTIFICATE SIGNED BY THE COMPETENT BRITISH AUTHORITY TAKING UP :

THIS DOCUMENT MUST GO WITH THE GOOD TO THE FRENCH BORDER CONTROL POST WHERE THE SPS CONTROL WILL TAKE PLACE



INFORMATION ABOUT THE GOOD

THE NUMBER OF THE SEAL AFFIXED ON THE CONSIGNMENT

THE REFERENCES REQUIRED BY EU REGULATION



CERTAIN SEAFOOD PRODUCTS WILL HAVE TO COME WITH A CATCH CERTIFICATE

MINISTÈRE DE L'AGRICULTURE ET DE L'ALIMENTATION

Plan ahead and initiate the French sanitary formalities

STEP 5 – INITIATE SANITARY AND CUSTOMS FORMALITIES PRIOR TO THE SHIPMENT OF THE GOODS OPERATOR INVOLVED : THE IMPORTER OR THE INTERMEDIARY OF HIS CHOICE

FOR THIS STEP AND THE FOLLOWING, IT IS POSSIBLE TO RELY ON AN INTERMEDIARY: OPERATOR RESPONSIBLE FOR A CONSIGNMENT, REGISTERED CUSTOMS OFFICIAL

ANTICIPATING THOSE STEPS WILL MAKE THE BORDER CROSSING EASIER



HAVE ACCESS TO TRACES AND BE REGISTERED AS AN OPERATOR IN TRACES FOR THE RELATED POINT OF ENTRY



PRE-NOTIFY THE DATA RELATED TO THE GOOD IN THE EU SYSTEM TRACES, TO OBTAIN THE CHED NUMBER



PROVIDE A SCANNED COPY OF THE BRITISH HEALTH/PHYTOSANITARY CERTIFICATE TO THE PRENOTIFICATION



DROP THE ADVANCE DECLARATION OF IMPORTATION OF THE GOOD IN THE CUSTOMS SYSTEM « DELTA-G » OR THE DECLARATION OF TRANSIT IN THE RELEVANT SYSTEM « DELTA-T », MENTIONING THE RELATED TRACES CHED NUMBER.

MINISTÈRE DE L'AGRICULTURE ET DE L'ALIMENTATION



FACTSHEET

Inform drivers about the new boarding procedures in the UK

- They now need to have new documents when boarding in addition to the CMR and their identity documents, etc.:
 - Commercial documents
 - British (phyto)sanitary certificate

STEP 6 - CHECKS ON BOARDING IN THE UNITED KINGDOM OPERATOR INVOLVED : DRIVER

CHECK THAT:



THE WHOLE SET OF COMMERCIAL DOCUMENTS AND THE BRITISH HEALTH/PHYTOSANITARY CERTIFICATE COMING WITH THE GOOD



THE RELATED TRACES CHED NUMBER HAS BEEN PROVIDED IN THE CUSTOMS DECLARATION (IMPORTATION OR TRANSIT)



WHEN NECESSARY, CHECK THAT THE CONSIGNMENT'S COMMERCIAL SEAL MATCHES THE ONE MENTIONED IN THE HEALTH/PHYTOSANITARY CERTIFICATE



ON BOARDING, INFORM CROSS-CHANNEL COMPANIES (SHIPPING AND TUNNEL COMPANIES) THAT THE PRODUCTS ARE SUBMITTED TO SPS CONTROLS. THAT INFORMATION WILL BE MADE AVAILABLE IN THE SMART BORDER SYSTEM BY THE CROSS-CHANNEL COMPANIES (SI BREXIT).

MINISTÈRE DE L'AGRICULTURE ET DE L'ALIMENTATION

- The driver goes to the boarding desk and
 - Presents their boarding documents
 - Import and export customs documents
 - British Sanitary Certificates
 - Completes the ferry company questionnaire
 - Under the TIR/ATA system
 - SIVEP if transporting health/phytosanitary/veterinary products
 - ...
- The company enters certain information provided by the driver into their system (ATA/TIR system_SIVEP_EMPTY_TEL No....)

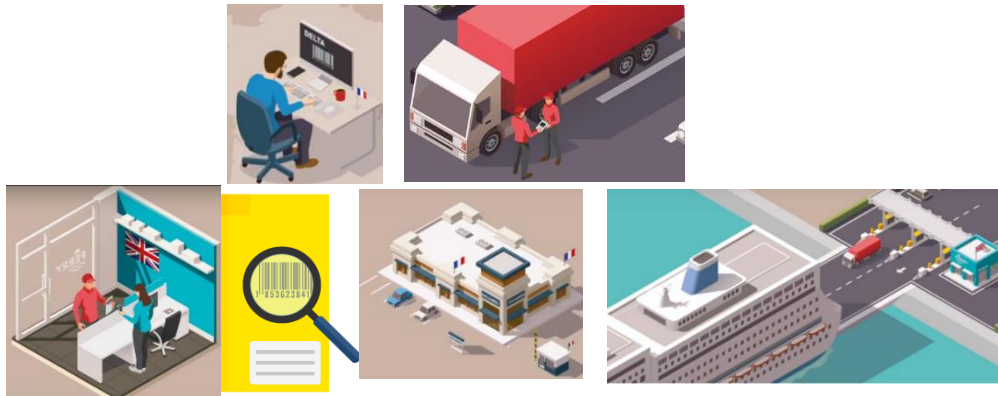
Smooth traffic flow will depend on drivers being properly informed.

- All this information is sent to the French customs "smart border" BREXIT IS.





FACTSHEET



- During the crossing, the French customs smart border system "BREXIT IS" informs the ferry company of the status of the goods/lorry

Inform drivers on the possible procedures on disembarking in France

- The ferry company informs the driver in real time of the status of the goods using the lorry trailer registration number, by:

- Display screen on the ferry
- SMS sent to the driver
- Ferry crew
- Unloading deckhand



What are the possible statuses transporting

GREEN

when

health/phytosanitary/veterinary products

SIVEP

The lorry's status is

→ Goods checked at the SIVEP

The lorry must go to the SIVEP sanitary, phytosanitary or veterinary inspection centre for the goods to be checked.

The lorry's status is

- The CHED has already been issued (based on documentary checks only) and the customs import formalities validated
- The lorry can leave the terminal

The lorry's status is

ORANGE

- The lorry must park in the dedicated area at the terminal

What must the driver do on leaving the ferry?



FACTSHEET

- The driver must follow one of the channels marked **GREEN/ORANGE/SIVEP**



On arriving the French port, I follow the signs corresponding to the status I have been given:
green channel/orange channel

- If the lorry's status is Orange, it will be parked in the "Orange" parking area
- The driver must then call their manager or shipper or the customs number provided to complete the correct formalities
- Special crew provided by the ferry companies will assist lorry drivers with disembarkation:
 - Identification of status: GREEN/ORANGE/SIVEP
 - Identification of the channel to follow: Exit/Orange parking area/SIVEP
 - Identification of any formalities not yet accomplished or still required

STEP 7 – GUIDANCE FOR A DISEMBARKATION IN FRANCE
OPERATOR INVOLVED : DRIVER

ON ARRIVAL ON THE FRENCH TERRITORY, FOLLOW THE LANE INDICATED FOR THE VEHICLE LICENSE PLATE :



ORANGE LANE → IF THE COMMON HEALTH ENTRY DOCUMENT (CHED) HAS NOT YET BEEN ISSUED (IDENTITY AND/OR PHYSICAL CHECK TO BE CARRIED OUT)

GREEN LANE → IF THE COMMON HEALTH ENTRY DOCUMENT (CHED) HAS BEEN ISSUED (BASED ON A DOCUMENTARY CHECK ONLY)

FOR CONSIGNMENTS CONTAINING EXCLUSIVELY FISHERY PRODUCTS INTRODUCED IN CALAIS (PORT AND TUNNEL), COMING WITH A TRANSIT DECLARATION (T1) FOR BOULOGNE-SUR-MER, FOLLOW THE GREEN LANE AND MOVE TOWARDS THE BORDER CONTROL POST OF BOULOGNE-SUR-MER

MINISTÈRE DE L'AGRICULTURE ET DE L'ALIMENTATION



FACTSHEET

The steps at the SIVEP inspection centre

Inform my representative for the goods

- The representative for the goods or their intermediary (clerk/Registered Customs Representative (RCR)) must go to the SIVEP inspection centre at the same time as the carrier, with all the required documents.

STEP 8 - SANITARY AND PHYTOSANITARY CONTROLS AT THE BORDER CONTROL POST OPERATOR INVOLVED : INTERMEDIARY (OPERATOR RESPONSIBLE FOR A CONSIGNMENT, REGISTERED CUSTOMS REPRESENTATIVE)



WHEN ONLY A DOCUMENTARY CHECK IS REQUIRED, THE CHED CAN BE ISSUED WITHOUT GOING THROUGH BCP IF THE FORMALITIES HAVE BEEN ANTICIPATED



WHEN IDENTITY AND/OR PHYSICAL CHECKS ARE REQUIRED, GOING THROUGH BCP IS MANDATORY

- HAND IN THE COMMERCIAL DOCUMENTS AND THE ORIGINAL COPY OF THE HEALTH/PHYTOSANITARY CERTIFICATE FROM THE BRITISH AUTHORITIES TO THE INSPECTOR
- ASK THE DRIVER TO PUT THE TRAILER ON THE CONTROL PLATFORM AND OPEN IT, ON REQUEST OF THE INSPECTOR
- PRESENT PACKAGES FOR CONTROL, ON REQUEST OF THE INSPECTOR

MINISTÈRE DE L'AGRICULTURE ET DE L'ALIMENTATION

- The inspector/veterinarian carries out the inspection formalities

If the checks are satisfactory

- The CHED document is issued by the sanitary services
- The representative of the goods can complete the customs import formalities, enclosing the sanitary documents (compliant CHED)



FACTSHEET

STEP 9 - FOLLOWING THE SANITARY AND PHYTOSANITARY CONTROL OPERATOR INVOLVED : INTERMEDIARY (OPERATOR RESPONSIBLE FOR A CONSIGNMENT, REGISTERED CUSTOMS REPRESENTATIVE)

IF THE CONTROL IS SUCCESSFUL:



- ISSUANCE OF A COMMON HEALTH ENTRY DOCUMENT (CHED) WHICH COMES WITH THE GOOD
- COMPLETE CUSTOMS FORMALITIES
- ANTICIPATE PROCEDURE WITH THE CUSTOMS TO BE ABLE TO PAY OFF THE SANITARY OR PHYTOSANITARY IMPORT CHARGE

MINISTÈRE DE L'AGRICULTURE ET DE L'ALIMENTATION

- Once the goods are released by customs, their status changes to green and the lorry can leave the ferry terminal and continue on its way.

If there is a nonconformity

STEP 8 - SANITARY AND PHYTOSANITARY CONTROLS AT THE BORDER CONTROL POST OPERATOR INVOLVED : INTERMEDIARY (OPERATOR RESPONSIBLE FOR A CONSIGNMENT, REGISTERED CUSTOMS REPRESENTATIVE)

- IF NON-COMPLIANCES ARE OBSERVED : GOODS WILL BE CONSIGNED
- GOODS WILL BE DESTROYED OR TURNED AWAY IN CASE OF A MAJOR NON-COMPLIANCE THAT CAN'T BE REGULARISED, FOR INSTANCE :



MINISTÈRE DE L'AGRICULTURE ET DE L'ALIMENTATION



FACTSHEET

Special cases

SPECIFIC CASE OF THE LANDBRIDGE

ROAD TRANSIT BETWEEN IRELAND AND CONTINENTAL EU



TYPE OF CONTROLS CARRIED OUT AT THE FRENCH BORDER CONTROL POST ON CONSIGNMENTS COMING FROM IRELAND THROUGH THE LANDBRIDGE :

- PLANTS, FEED OF NON-ANIMAL ORIGIN : NO CONTROL
- LIVE ANIMALS, ANIMAL PRODUCTS : DOCUMENTARY CHECK
 - **BASED ON THE HEALTH CERTIFICATE FOR INTRA-EU EXCHANGES WHEN REQUIRED (LIVE ANIMALS)**
 - **BASED ON TRACES PRE-NOTIFICATION FOR THE OTHER GOODS**
 - **FOR CERTAIN CATEGORIES OF GOODS (I.E. ANIMAL BY-PRODUCTS) : SEALS MUST BE CHECKED AT THE BORDER CONTROL POST**

MINISTÈRE DE L'AGRICULTURE ET DE L'ALIMENTATION

SPECIFIC CASE OF WOOD PACKAGINGS AND PALLETS



WOOD PACKAGINGS AND PALLETS COMING FROM THE UK MUST BE MARKED WITH THE ISPM 15 STAMP

RANDOM SURVEILLANCE CONTROLS ON WOOD PACKAGINGS AND PALLETS COMING WITH ANY TYPE OF IMPORTED CONSIGNMENTS, WITH SPECIAL TARGETING ON SHIPMENTS LIKELY TO INTRODUCE PESTS



THE FOLLOWING POINTS MUST BE CHECKED :

- FREE FROM PARASITES OR ANY TRACES OF PROHIBITED PESTS
- COMPLIANCE WITH ISPM 15
- SAMPLINGS AND CONSIGNMENT CONSIGNED IN CASE OF SUSPICION OF CONTAMINATION AWAITING REPACKING

MINISTÈRE DE L'AGRICULTURE ET DE L'ALIMENTATION