



Catalogue

Land and real estate
on the Seine axis

Industry-logistics



**HAROPA
PORT**
Le Havre
Rouen
Paris

03 /
2024

Land and real estate on the Seine axis

HAROPA PORT | Le Havre

- Page 4 • Land offers
- Page 9 • Real estate offers

HAROPA PORT | Rouen

- Page 15 • Land offers

HAROPA PORT | Paris

- Page 22 • Land offers
- Page 28 • Real estate offers



Land



Real estate

Land offers port area of Le Havre

Commune of Oudalle

Page 5 • Est A29

Commune of Rogerville

Page 6 • Ouest A29

Page 7 • Cipha

City of Le Havre

Page 8 • Quai de Gironde



Est A29

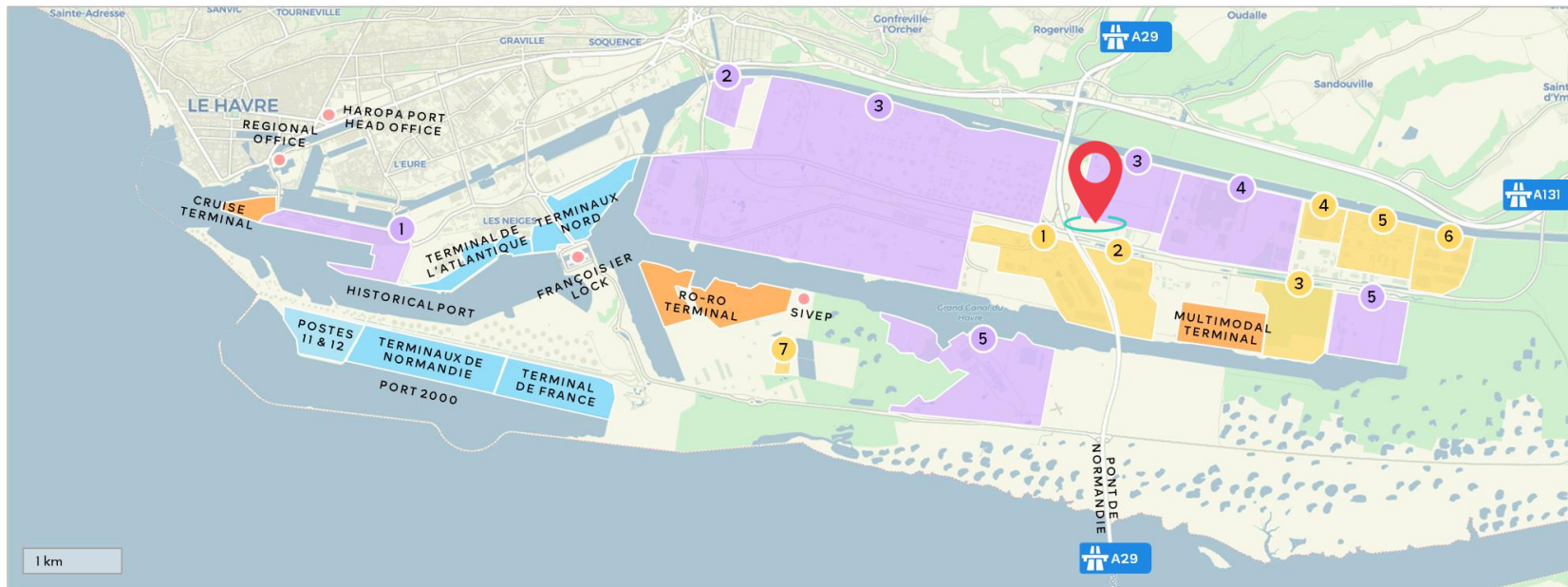
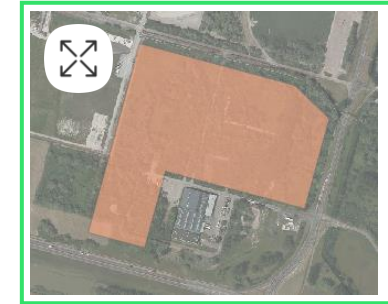
Surface area	16 ha
Port domain	Yes
Divisible	Yes
Utilities	<ul style="list-style-type: none"> ✓ Electricity ✓ Natural gas ✓ Clean water ✓ Industrial water ✓ Heat ✓ Nitrogen
Nearby	<ul style="list-style-type: none"> • A29/A131 motorways • Multimodal terminal • Pont de Normandie • Storage and logistics services



Land
Industry

Commune of Oudalle

HAROPA PORT | Le Havre



Logistics parks

- 1 PLPN*1
- 2 PLPN*2
- 3 PLPN*3
- 4 Parc des Alizés
- 5 Parc du Hode
- 6 Parc Prologis
- 7 Parc Frigo

Main industrial segments

- 1 Renewable energy
- 2 Aeronautics
- 3 Chemicals & petrochemicals
- 4 Automotive
- 5 Construction & waste

*Parc Logistique du Pont de Normandie

Ouest A29

Surface area	50 ha
Port domain	Yes
Divisible	Yes
Utilities	<ul style="list-style-type: none"> ✓ Electricity ✓ Natural gas ✓ Clean water ✓ Industrial water ✓ Heat ✓ Nitrogen
Nearby	<ul style="list-style-type: none"> • A29/A131 motorways • Multimodal terminal – public waterway berth with direct access to the Grand Canal • Storage and logistics services
Connections	Waterway operational and railway possible



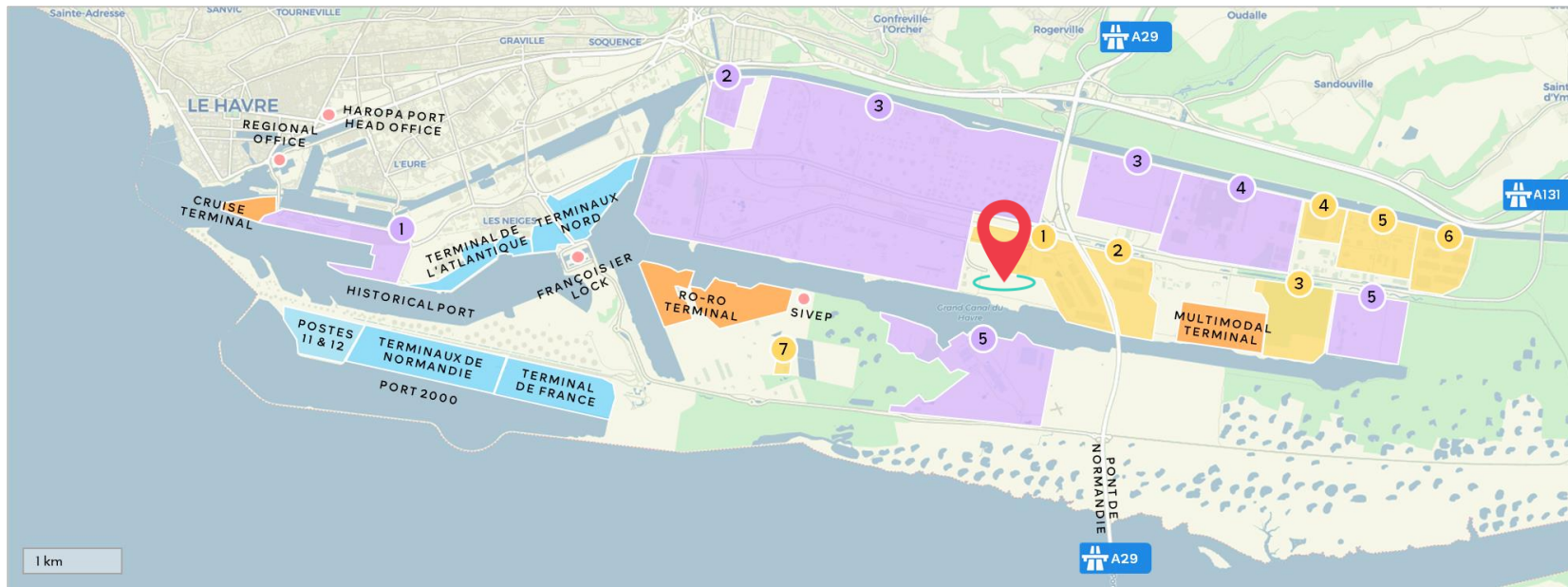
Land
Industry



Site
Greenfield

Commune of Rogerville

HAROPA PORT | Le Havre



Logistics parks

- 1 PLPN*1
- 2 PLPN*2
- 3 PLPN*3
- 4 Parc des Alizés
- 5 Parc du Hode
- 6 Parc Prologis
- 7 Parc Frigo

Main industrial segments

- 1 Renewable energy
- 2 Aeronautics
- 3 Chemicals & petrochemicals
- 4 Automotive
- 5 Construction & waste

*Parc Logistique du Pont de Normandie

Cipha

Surface area	25.7 ha
Port domain	Yes
Divisible	Yes
Utilities	<ul style="list-style-type: none"> ✓ Electricity ✓ Natural gas ✓ Clean water ✓ Industrial water ✓ Heat ✓ Compressed air ✓ Chemicals and petrochemicals ✓ Green hydrogen ✓ Biomass
Nearby	<ul style="list-style-type: none"> • A29 motorway • Multimodal terminal • Bulk terminal – MTV3 public berth • Pont de Normandie • Storage and logistics services



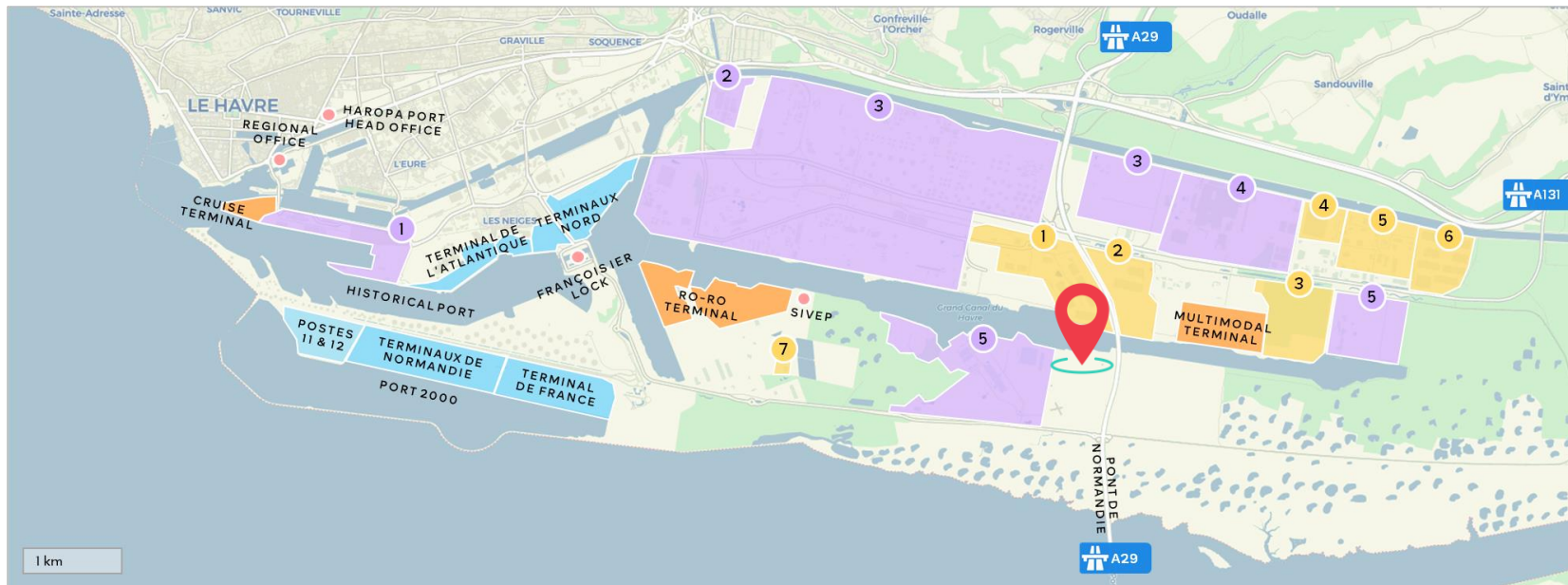
Land
Industry



Partly landscaped site
Brownfield

Commune of Rogerville

HAROPA PORT | Le Havre



Logistics parks

- 1 PLPN*1
- 2 PLPN*2
- 3 PLPN*3
- 4 Parc des Alizés
- 5 Parc du Hode
- 6 Parc Prologis
- 7 Parc Frigo

Main industrial segments

- 1 Renewable energy
- 2 Aeronautics
- 3 Chemicals & petrochemicals
- 4 Automotive
- 5 Construction & waste

*Parc Logistique du Pont de Normandie

Quai de Gironde

Surface area	5 ha
Port domain	Yes
Divisible	Yes
Nearby	<ul style="list-style-type: none"> Urban amenities and industrial port area Offshore wind farm Empty container storage facilities New tramway line project



Land
City-port interface



Partly landscaped site
Brownfield

Ville du Havre

HAROPA PORT | Le Havre



Logistics parks

- 1 PLPN*1
- 2 PLPN*2
- 3 PLPN*3
- 4 Parc des Alizés
- 5 Parc du Hode
- 6 Parc Prologis
- 7 Parc Frigo

Main industrial segments

- 1 Renewable energy
- 2 Aeronautics
- 3 Chemicals & petrochemicals
- 4 Automotive
- 5 Construction & waste

*Parc Logistique du Pont de Normandie

Real estate offers port area of Le Havre

Commune of Saint-Vigor-d'Ymonville



Page 10 • Le Hode, DC2

Commune of Oudalle

Page 11 • PLPN1, Stockespace 1

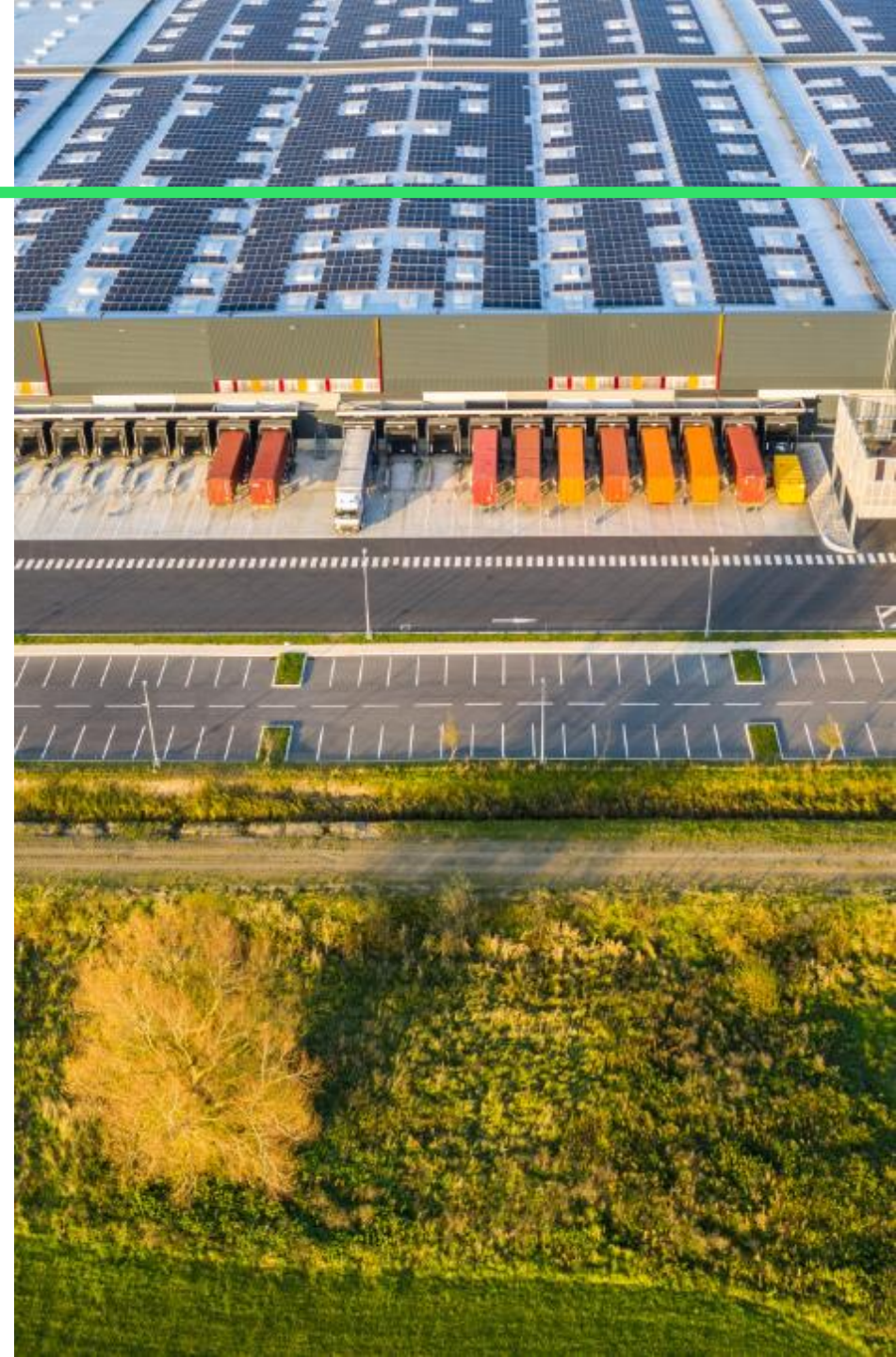
Page 12 • PLPN2

Commune of Sandouville

Page 13 • PLPN3, DC9 & DC10

Commune of Gonfreville-l'Orcher

Page 14 • Entrepôt GLP



Le Hode, DC2

Surface area	6,300 sqm
Port domain	No
Divisible	No
Features	<ul style="list-style-type: none"> • 1 unit with a railway berth • 1 outdoor storage area of 7,000 sqm
Nearby	<ul style="list-style-type: none"> • A29/A131 motorways • Multimodal terminal • Pont de Normandie
ICPE regime	1532, 2662, 2662-1, 2662-2



New-build program
Logistics



Manager
Prologis

Commune of Saint-Vigor-d'Ymonville

HAROPA PORT | Le Havre



Data sheet
Prologis Parc du Hode



Logistics parks

- 1 PLPN*1
- 2 PLPN*2
- 3 PLPN*3
- 4 Parc des Alizés
- 5 Parc du Hode
- 6 Parc Prologis
- 7 Parc Frigo

Main industrial segments

- 1 Renewable energy
- 2 Aeronautics
- 3 Chemicals & petrochemicals
- 4 Automotive
- 5 Construction & waste

*Parc Logistique du Pont de Normandie

PLPN1, Stockespace 1

Surface area	24,000 sqm
Port domain	Yes
Divisible	No
Nearby	<ul style="list-style-type: none"> A29/A131 motorways Multimodal terminal Pont de Normandie
ICPE regime	1510, 1530, 1532, 2255, 2662, 2663, 2910, 2925



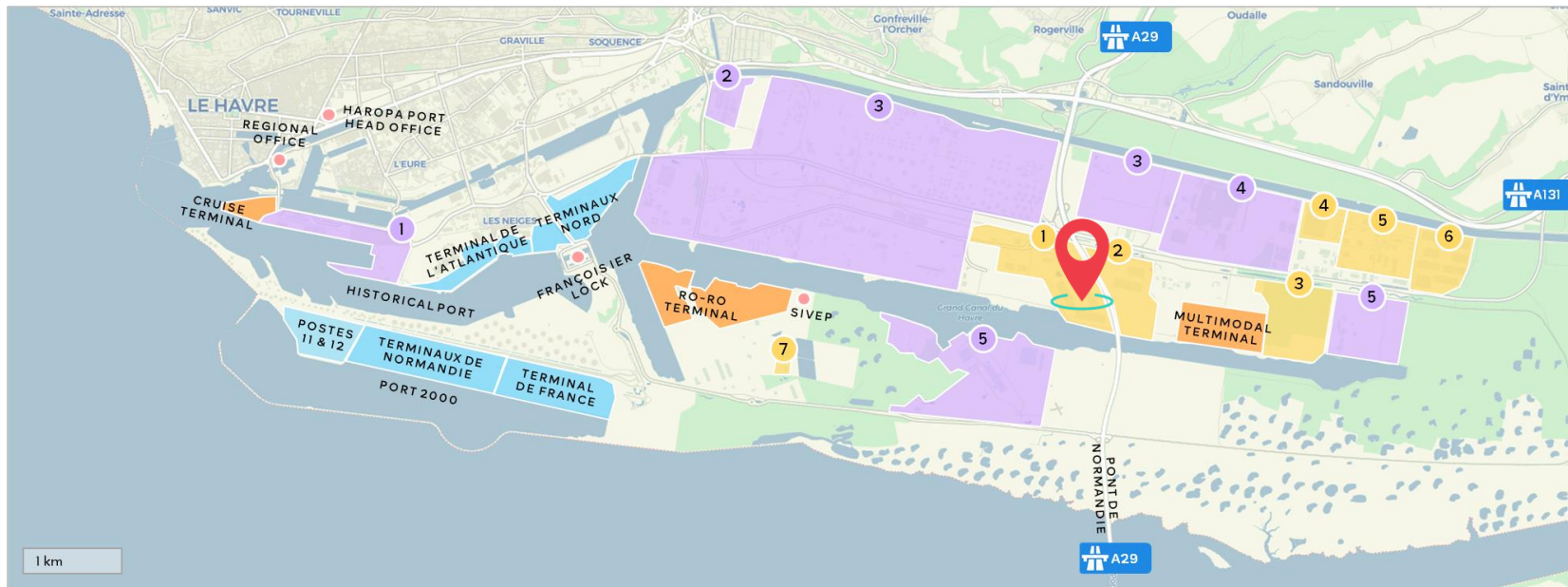
Build program
Logistics



Manager
AEW

Commune of Oudalle

HAROPA PORT | Le Havre



Logistics parks

- 1 PLPN*1
- 2 PLPN*2
- 3 PLPN*3
- 4 Parc des Alizés
- 5 Parc du Hode
- 6 Parc Prologis
- 7 Parc Frigo

Main industrial segments

- 1 Renewable energy
- 2 Aeronautics
- 3 Chemicals & petrochemicals
- 4 Automotive
- 5 Construction & waste

*Parc Logistique du Pont de Normandie

PLPN2

Surface area	103,000 sqm
Port domain	Yes
Divisible	Yes, from 6,000 sqm upwards
Features	<ul style="list-style-type: none"> 12 units amounting to 97,000 sqm including 1 unit of 6,000 sqm dedicated to hazardous goods 8 office blocks 1 container storage area
Nearby	<ul style="list-style-type: none"> A29/A131 motorways Multimodal terminal Pont de Normandie



New-build program
Logistics



Manager
Telamon Asset Management



Label
BREEAM Excellent

Commune of Oudalle

HAROPA PORT | Le Havre



Logistics parks

- 1 PLPN*1
- 2 PLPN*2
- 3 PLPN*3
- 4 Parc des Alizés
- 5 Parc du Hode
- 6 Parc Prologis
- 7 Parc Frigo

Main industrial segments

- 1 Renewable energy
- 2 Aeronautics
- 3 Chemicals & petrochemicals
- 4 Automotive
- 5 Construction & waste

*Parc Logistique du Pont de Normandie

PLPN3, DC9 & DC10

Surface area	125,000 sqm
Port domain	Yes
Divisible	Yes
Features	<ul style="list-style-type: none"> • 20 units of 6,000 sqm • 6 office blocks • Pallet and container storage areas • Seveso low threshold
Nearby	<ul style="list-style-type: none"> • A29/A131 motorways • Multimodal terminal • Pont de Normandie



New-build program
Logistics



Manager
Prologis



Availability
To be defined by the manager

Commune of Sandouville

HAROPA PORT | Le Havre



Data sheet
Prologis PLPN3



Logistics parks

- 1 PLPN*1
- 2 PLPN*2
- 3 PLPN*3
- 4 Parc des Alizés
- 5 Parc du Hode
- 6 Parc Prologis
- 7 Parc Frigo

Main industrial segments

- 1 Renewable energy
- 2 Aeronautics
- 3 Chemicals & petrochemicals
- 4 Automotive
- 5 Construction & waste

*Parc Logistique du Pont de Normandie

Entrepôt GLP

Surface area	70,000 sqm
Port domain	No
Divisible	Yes
Features	<ul style="list-style-type: none"> • 11 units of 6,000 sqm • 3 office blocks
Nearby	<ul style="list-style-type: none"> • A29/A131 motorways • Multimodal terminal • Port 2000 terminals
ICPE regime	1510, 2910, 2925



New-build program
Industry



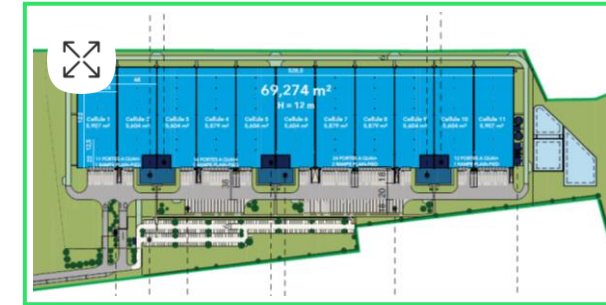
Manager
GLP



Availability
To be defined by the manager

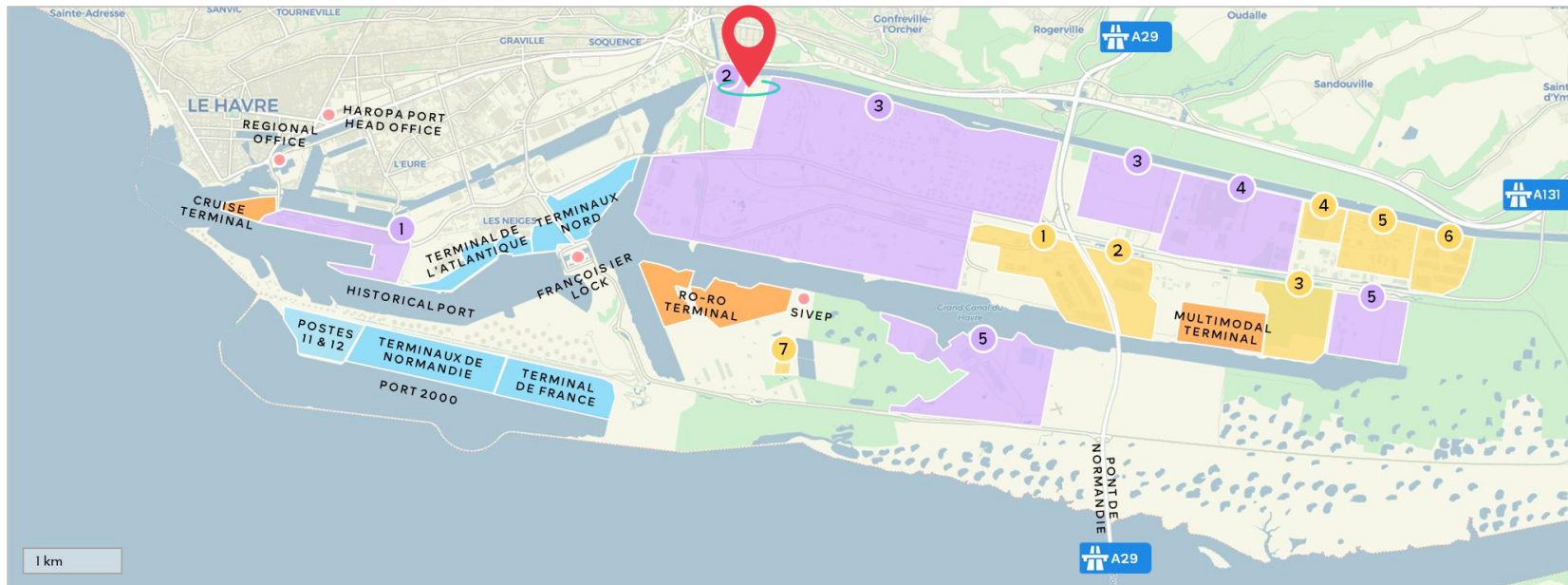
Commune of Gonfreville-l'Orcher

HAROPA PORT | Le Havre



Data sheet

GLP Parc Le Havre



Logistics parks

- 1 PLPN*1
- 2 PLPN*2
- 3 PLPN*3
- 4 Parc des Alizés
- 5 Parc du Hode
- 6 Parc Prologis
- 7 Parc Frigo

Main industrial segments

- 1 Renewable energy
- 2 Aeronautics
- 3 Chemicals & petrochemicals
- 4 Automotive
- 5 Construction & waste

*Parc Logistique du Pont de Normandie

Land offers port area of Rouen

Commune of Grand-Couronne

Page 16 • Logistics platform

Page 17 • Industrial platform

Commune of Petit-Couronne

Page 18 • Ecozip

Commune of Saint-Jean-de-Folleville

Page 19 • Radicâtel amont Parcelle 1

Page 20 • Radicâtel amont Parcelle 2

Page 21 • Radicâtel aval



Logistics platform

Surface area	7 ha
Port domain	Yes
Divisible	Depending on the project
Utilities	✓ Electricity ✓ Clean water
Nearby	<ul style="list-style-type: none"> • A13 motorway • Container and General Cargo Terminal (TCMD) • Trimodal platform
Connections	Waterway and railway operational



Land
Logistics



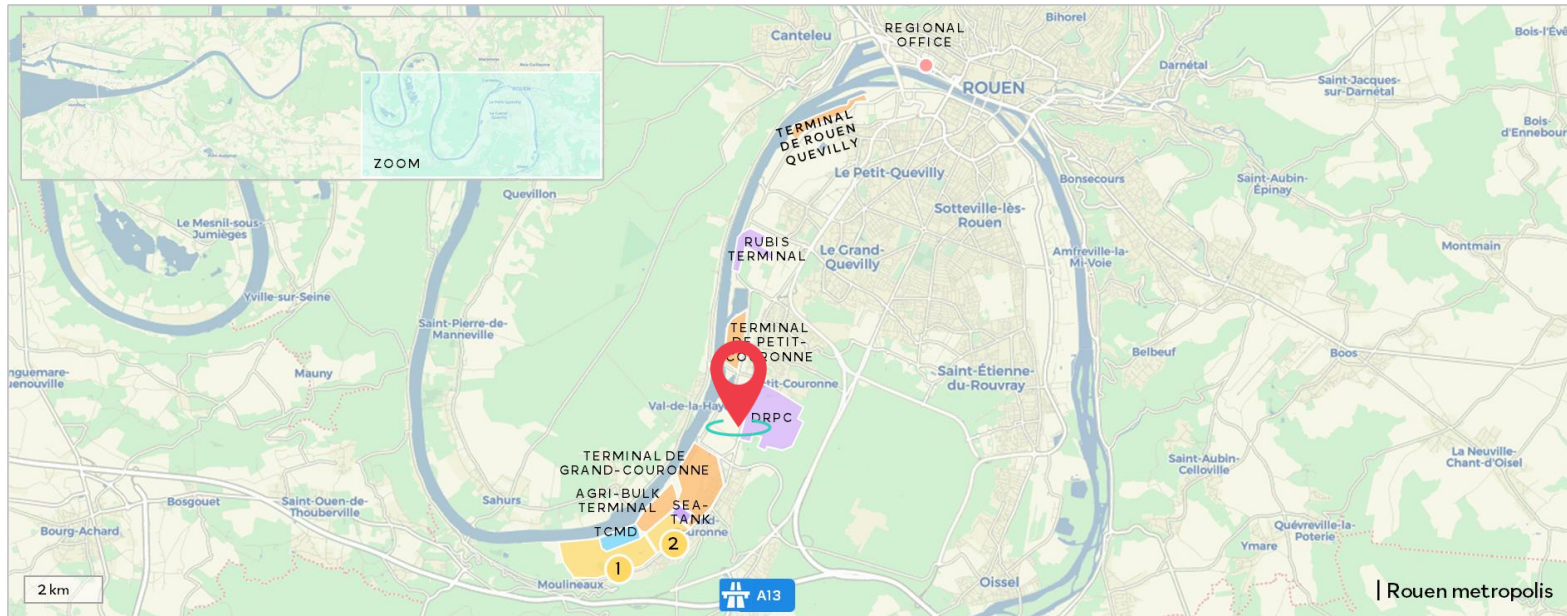
Landscaped site
Pre-loading carried out

Commune of Grand-Couronne

HAROPA PORT | Rouen



Ref. 4766
HAROPA PORT Real Estate



Logistics parks

- 1 RVSL*1
- 2 RVSL*Amont

*Rouen Vallée de Seine Logistique

Industrial platform

Surface area	51.2 ha
Port domain	Yes
Divisible	Depending on the project
Utilities	<ul style="list-style-type: none"> ✓ Electricity ✓ Natural gas ✓ Clean water ✓ Industrial water
Nearby	<ul style="list-style-type: none"> • A13 motorway • Container and General Cargo Terminal (TCMD) • Trimodal platform
Connections	Waterway and railway operational via TCMD



Land
Industry



Landscaped site
Brownfield



Label
Turnkey site



CFP underway
Q1 2024

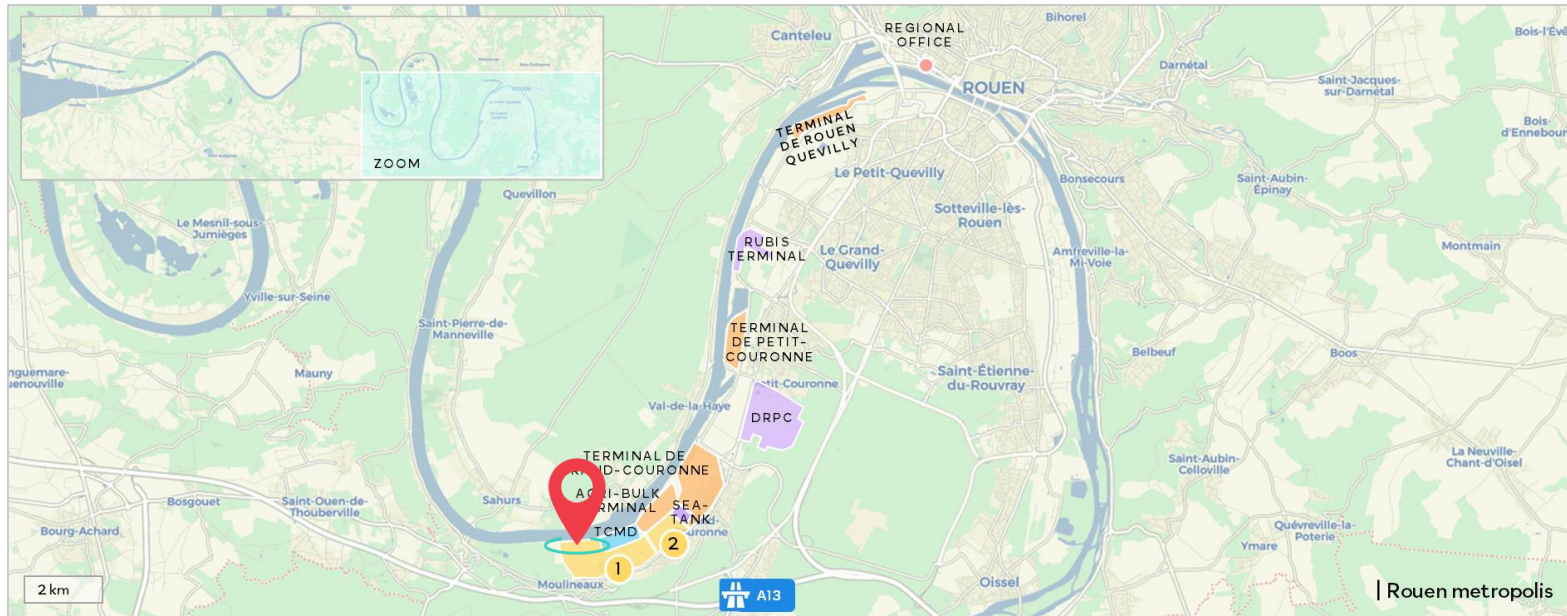


Commune of Grand-Couronne

HAROPA PORT | Rouen



Ref. 5890
HAROPA PORT Real Estate



Logistics parks

- 1 RVSL*1
- 2 RVSL*Amont

*Rouen Vallée de Seine Logistique

Ecozip

Surface area	12.6 ha
Port domain	Yes
Divisible	Depending on the project
Utilities	<ul style="list-style-type: none"> ✓ Electricity ✓ Natural gas ✓ Clean water ✓ Industrial water ✓ Heat
Nearby	<ul style="list-style-type: none"> • A13 motorway • Container and General Cargo Terminal (TCMD) • Trimodal platform • Darse des Docks
Connections	Waterway and railway operational



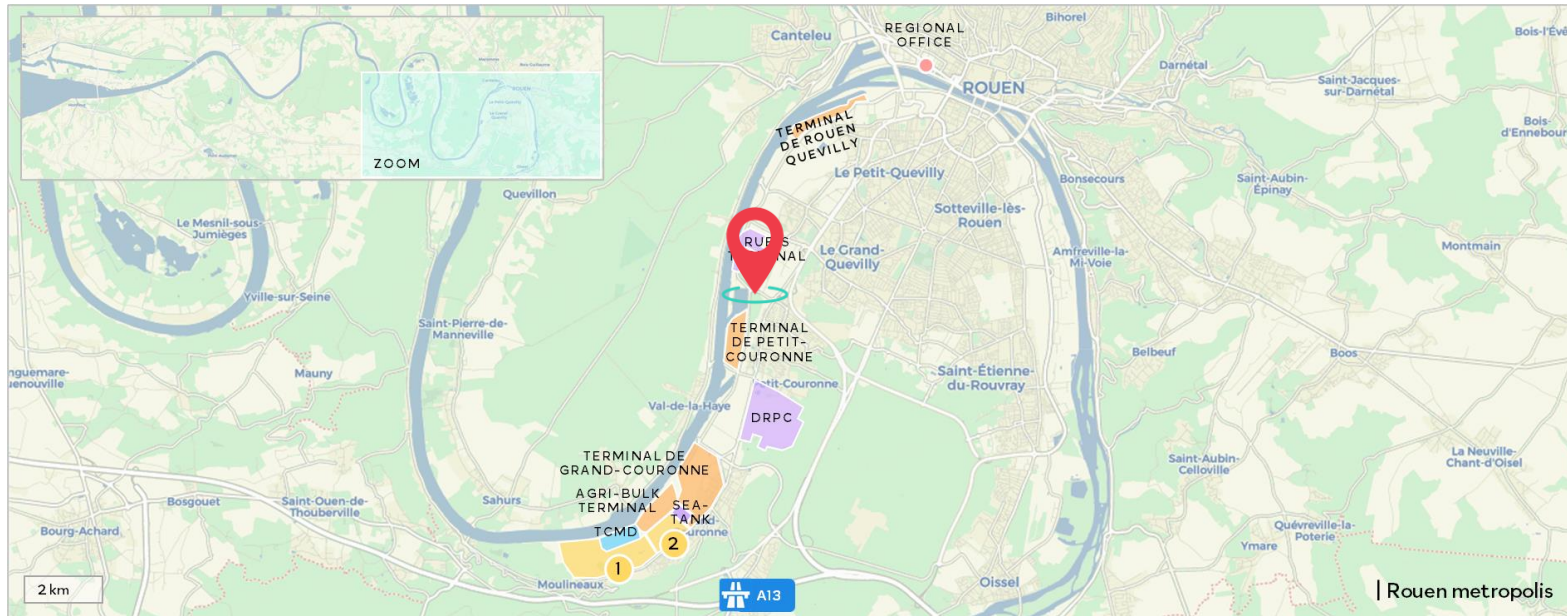
Land
Logistics & industry

Commune of Petit-Couronne

HAROPA PORT | Rouen



Ref. 4782
HAROPA PORT Real Estate



Logistics parks

- 1 RVSL*1
- 2 RVSL*Amont

*Rouen Vallée de Seine Logistique

Radicâtel amont Parcelle 1

Surface area	8.8 ha
Port domain	Yes
Divisible	Depending on the project
Utilities	<ul style="list-style-type: none"> ✓ Electricity ✓ Natural gas ✓ Clean water ✓ Industrial water
Nearby	<ul style="list-style-type: none"> • A29/ A131/A13 motorways • Terminal de Radicâtel: only quintamodal (pipeline) site in Normandy and western Paris • 1 RoRo berth of 410 m with mobile access gateway
Connections	Waterway and railway operational



Land
Logistics



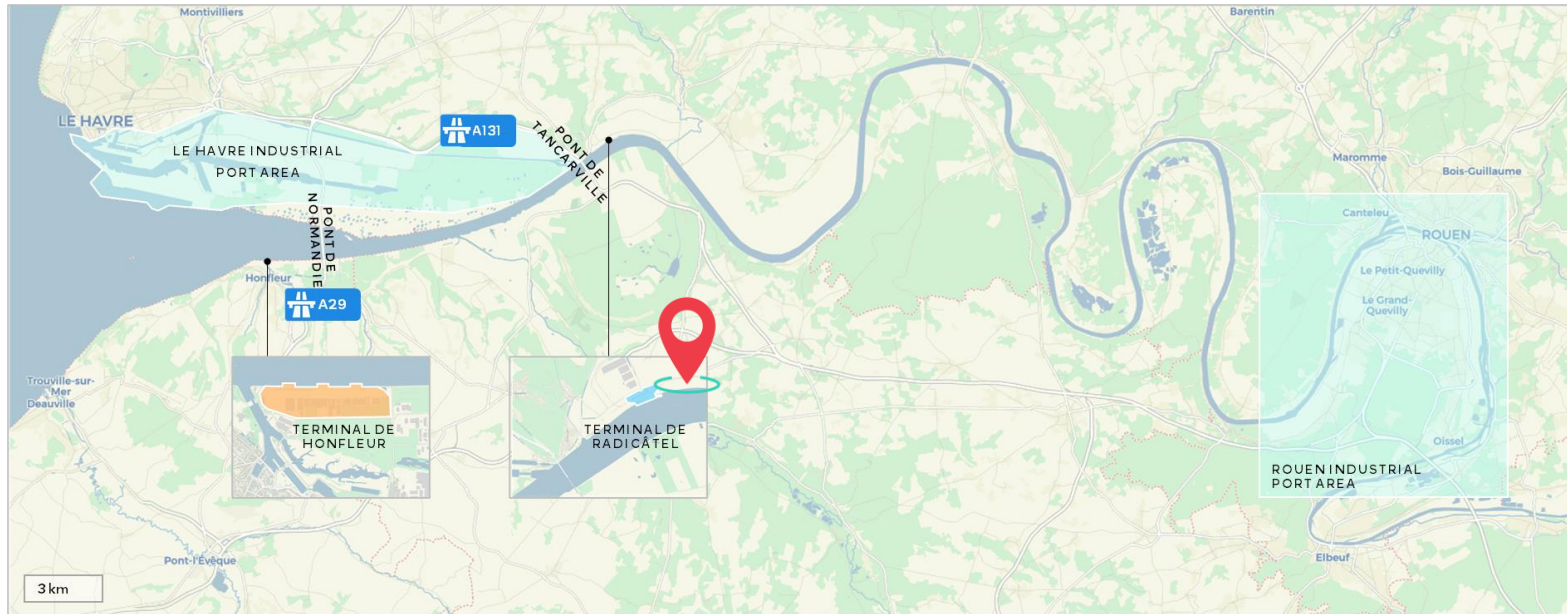
Site
Greenfield

Commune of Saint-Jean-de-Folleville

HAROPA PORT | Rouen



Ref. 4793
HAROPA PORT Real Estate



Radicâtel amont Parcelle 2

Surface area	4.9 ha
Port domain	Yes
Divisible	Depending on the project
Utilities	<ul style="list-style-type: none"> ✓ Electricity ✓ Natural gas ✓ Industrial water
Nearby	<ul style="list-style-type: none"> • A29/ A131/A13 motorways • Terminal de Radicâtel: only quintamodal (pipeline) site in Normandy and western Paris • 1 RoRo berth of 410 m with mobile access gateway
Connections	Waterway and railway operational



Land
Logistics



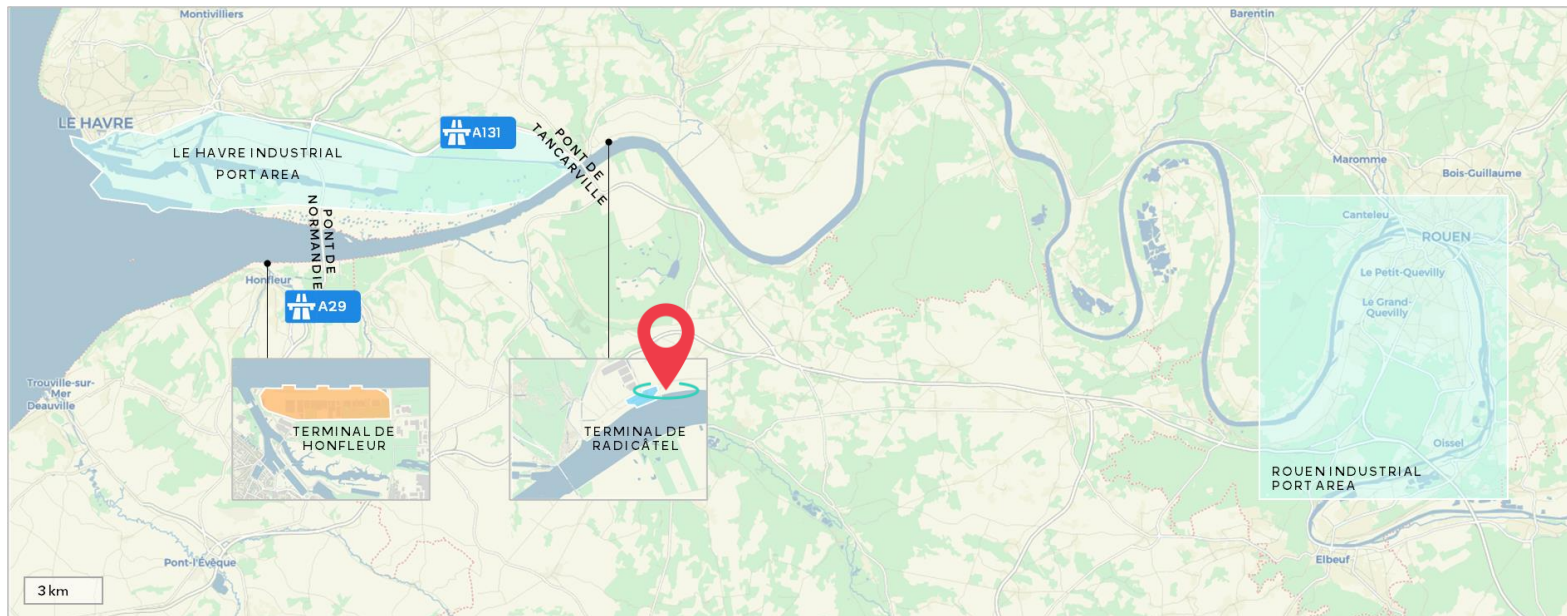
Site
Greenfield

Commune of Saint-Jean-de-Folleville

HAROPA PORT | Rouen



Ref. 5886
HAROPA PORT Real Estate



Radicâtel aval

Surface area	12.5 ha incl. 8.5 ha usable (pipes, railway tracks)
Port domain	Yes
Divisible	Depending on the project
Utilities	<ul style="list-style-type: none"> ✓ Electricity ✓ Natural gas ✓ Clean water
Nearby	<ul style="list-style-type: none"> • A131 motorway • Terminal de Radicâtel: only quintamodal (pipeline) site in Normandy and western Paris • 1 RoRo berth of 410 m with mobile access gateway
Connections	Waterway and railway operational



Land
Logistics



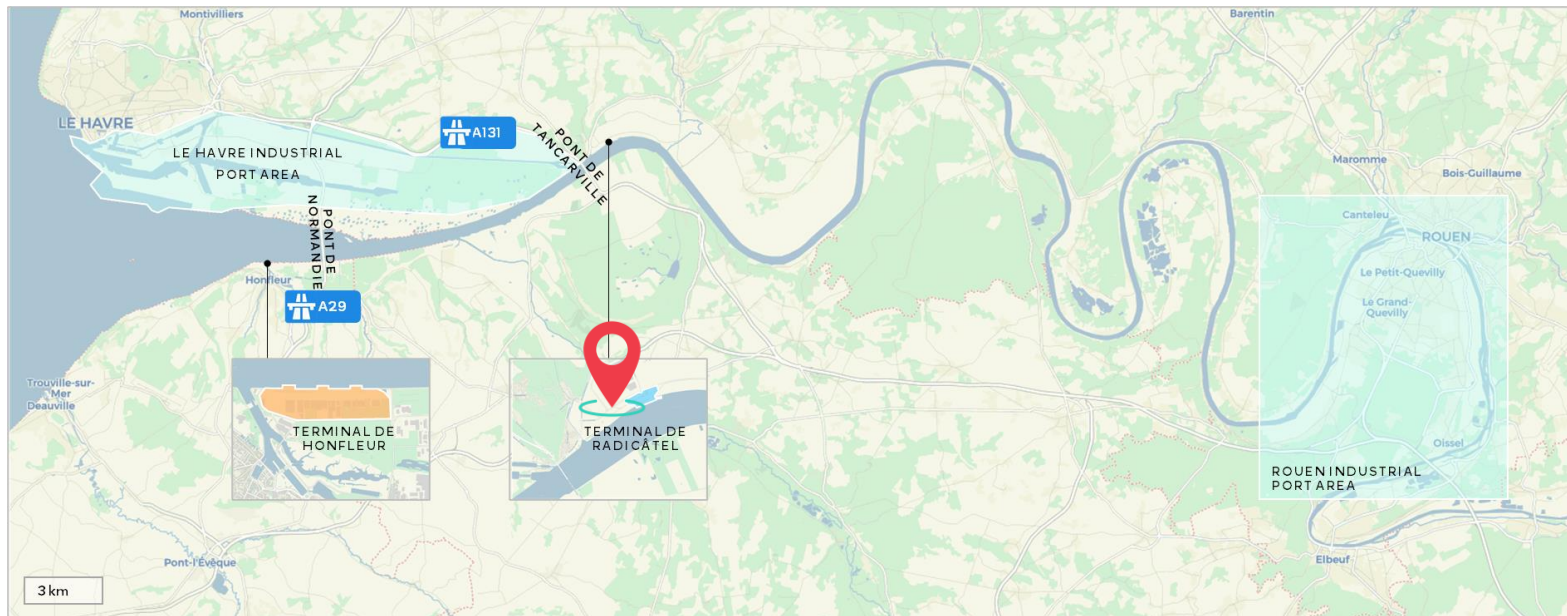
Site
Greenfield

Commune of Saint-Jean-de-Folleville

HAROPA PORT | Rouen



Ref. 4794
HAROPA PORT Real Estate



Land offers port area of Paris

Commune of Bruyères-sur-Oise

Page 23 • Terrain amont

Commune of Gennevilliers

Page 24 • Terrain sous l'A15

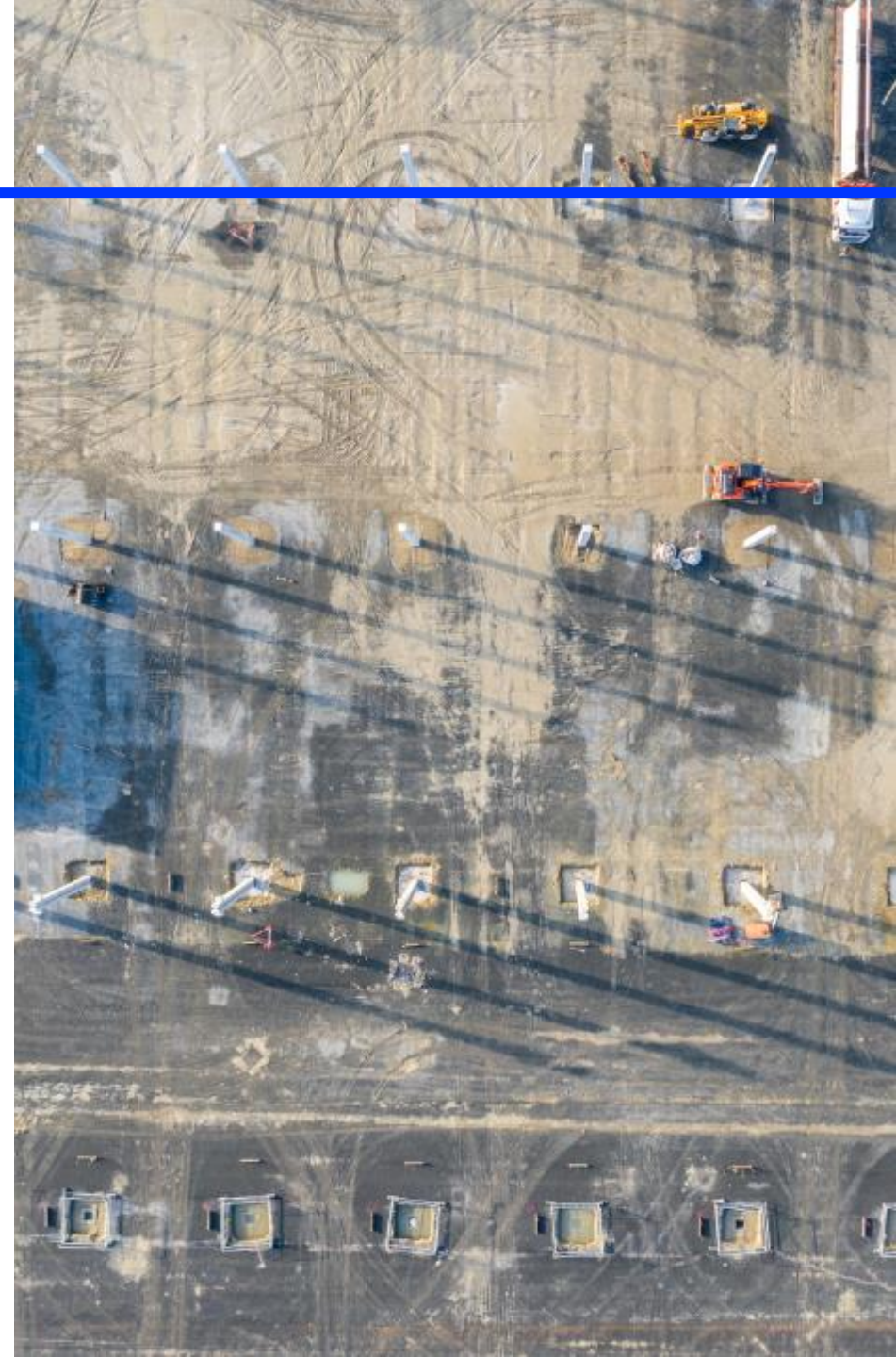
Page 25 • Route du Môle 2-3

Commune of Bonneuil-sur-Marne

Page 26 • Lot 5

Commune of Montereau-Fault-Yonne

Page 27 • Terrain Montereau



Terrain amount

Surface area	5.8 ha
Port domain	Yes
Divisible	No
Nearby	<ul style="list-style-type: none"> • A16 motorway • 1 shared-use dock • 1 container terminal • 1 railway terminal
Connections	Waterway operational and railway possible

Commune of Bruyères-sur-Oise

HAROPA PORT | Paris



Land
Logistics & industry



Partly landscaped site
9,900 sqm warehouse on site



Availability
Q4 2024



Agence Seine aval

- 14 urban ports
- 3 multimodal platforms

*Port Seine-Métropole Ouest
Project to 2030/2040

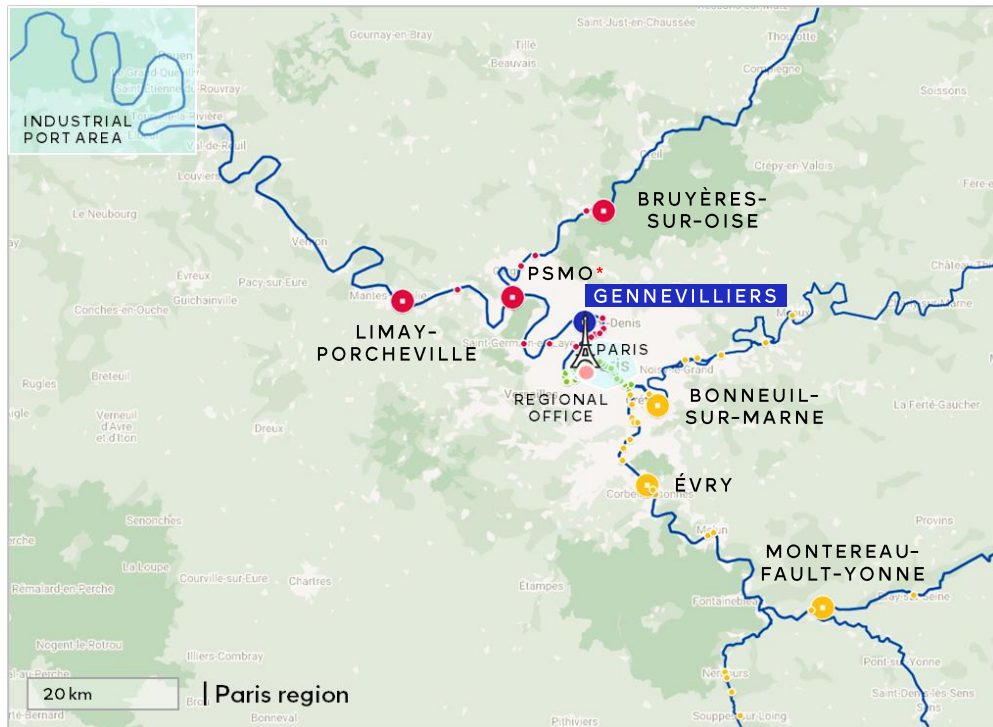


CEI underway

HAROPA PORT Real Estate

Terrain sous l'A15

Surface area	0.8 ha
Port domain	Yes
Divisible	No
Nearby	<ul style="list-style-type: none"> A86/A14/A15/A1 motorways River container terminal
Safety	Enclosed and secure site (access control)



Commune of Gennevilliers

HAROPA PORT | Paris



Land
Industrial bulk



Site
Brownfield



CFP to come
Q1 2024 NEW



Ref. 5652
HAROPA PORT Real Estate

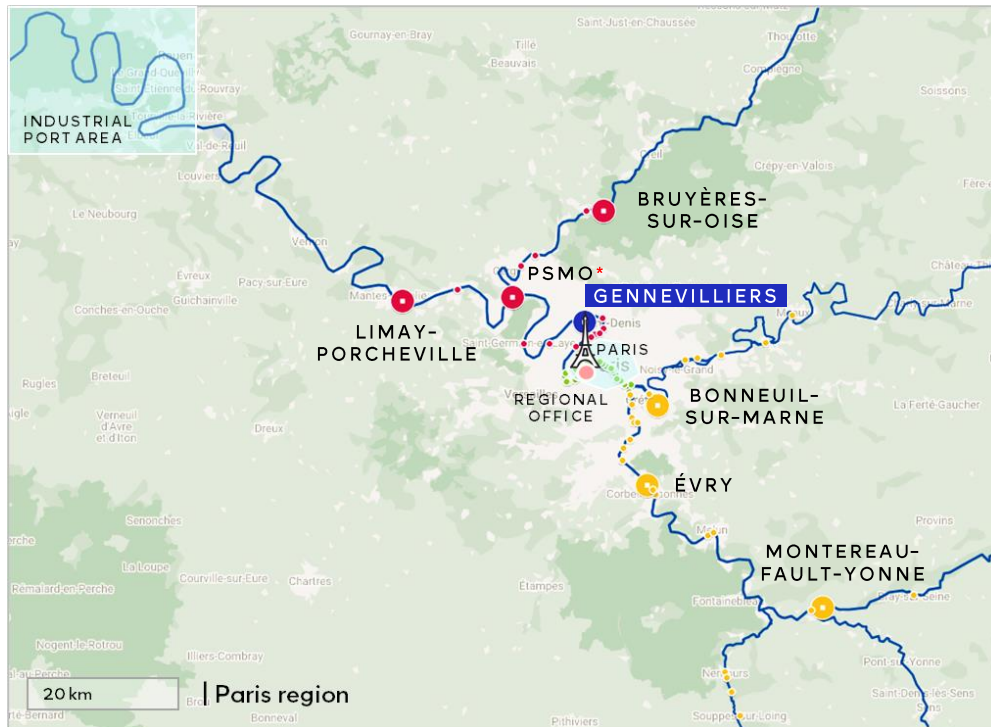
Agence de Gennevilliers

● 1 multimodal platform

*Port Seine-Métropole Ouest
Project to 2030/2040

Route du Môle 2-3

Surface area	1.2 ha
Port domain	Yes
Divisible	No
Utilities	<ul style="list-style-type: none"> ✓ Electricity ✓ Natural gas ✓ Clean water
Nearby	<ul style="list-style-type: none"> • A86/A14/A15/A1 motorways • River container terminal
Connections	Waterway operational and railway possible
Safety	Enclosed and secure site (access control)



Commune of Gennevilliers

HAROPA PORT | Paris



Land
Logistics



Site
Brownfield



Ref. 2669
HAROPA PORT Real Estate

Agence de Gennevilliers

● 1 multimodal platform

*Port Seine-Métropole Ouest
Project to 2030/2040

Lot 5

Surface area	3.4 ha
Port domain	Yes
Divisible	No
Nearby	<ul style="list-style-type: none">• Excellent road connection with RN406 extension• 3 shared-use docks in the port of Bonneuil

Commune of Bonneuil-sur-Marne

HAROPA PORT | Paris



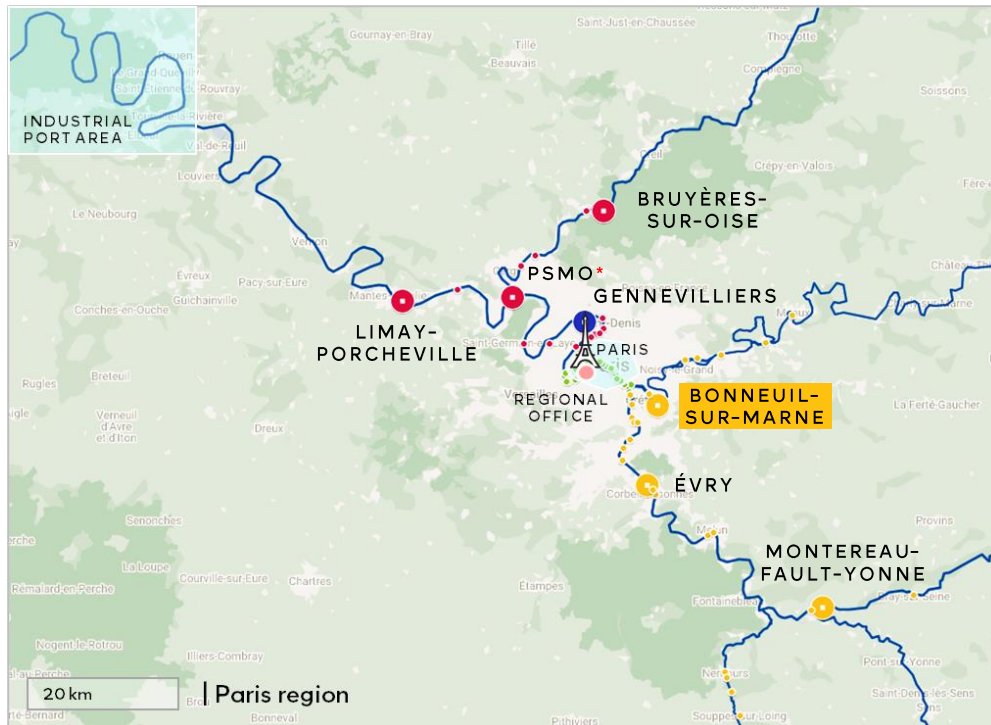
Land
Logistics



Landscaped site
Brownfield



CFP to come
Q1/Q2 2024 NEW



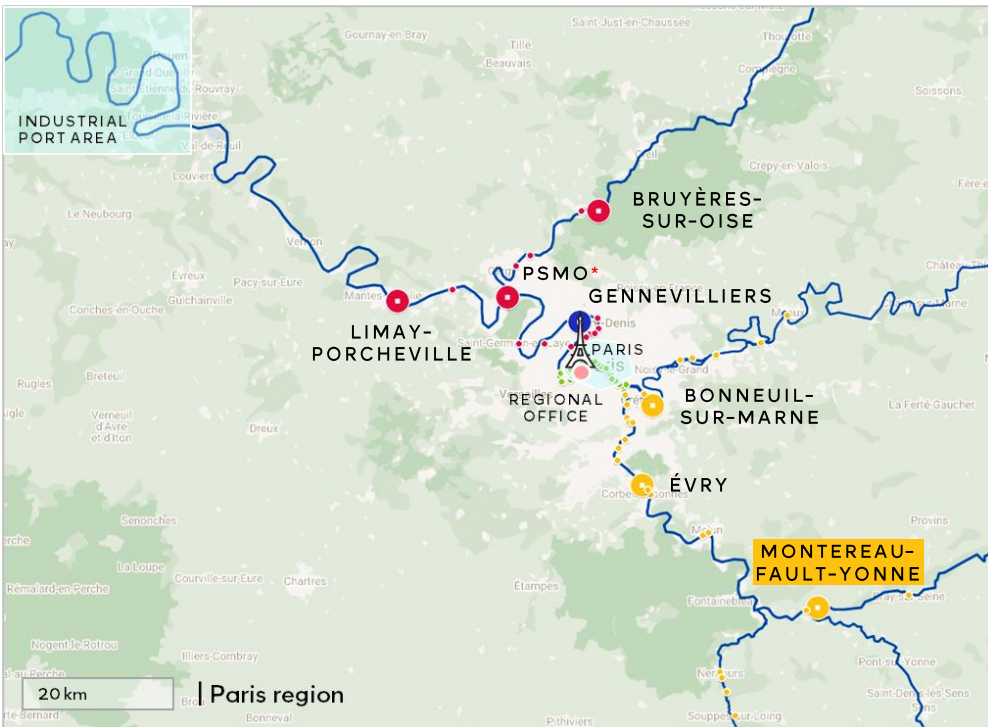
Agence Seine amont

- 25 urban ports
- 3 multimodal platforms

*Port Seine-Métropole Ouest
Project to 2030/2040

Terrain Montereau

Surface area	1.5 ha
Port domain	Yes
Divisible	No
Utilities	<ul style="list-style-type: none"> ✓ Electricity ✓ Natural gas ✓ Clean water
Nearby	<ul style="list-style-type: none"> • A5 motorway • Waterway access • Container terminal project underway
Connections	Waterway operational and railway possible



Commune of Montereau-Fault-Yonne

HAROPA PORT | Paris



Land
Industrial bulk



Site
Greenfield



Ref. 5692
HAROPA PORT Real Estate

Agence Seine amont

- 25 urban ports
- 3 multimodal platforms

*Port Seine-Métropole Ouest
Project to 2030/2040

Real estate offers port area of Paris

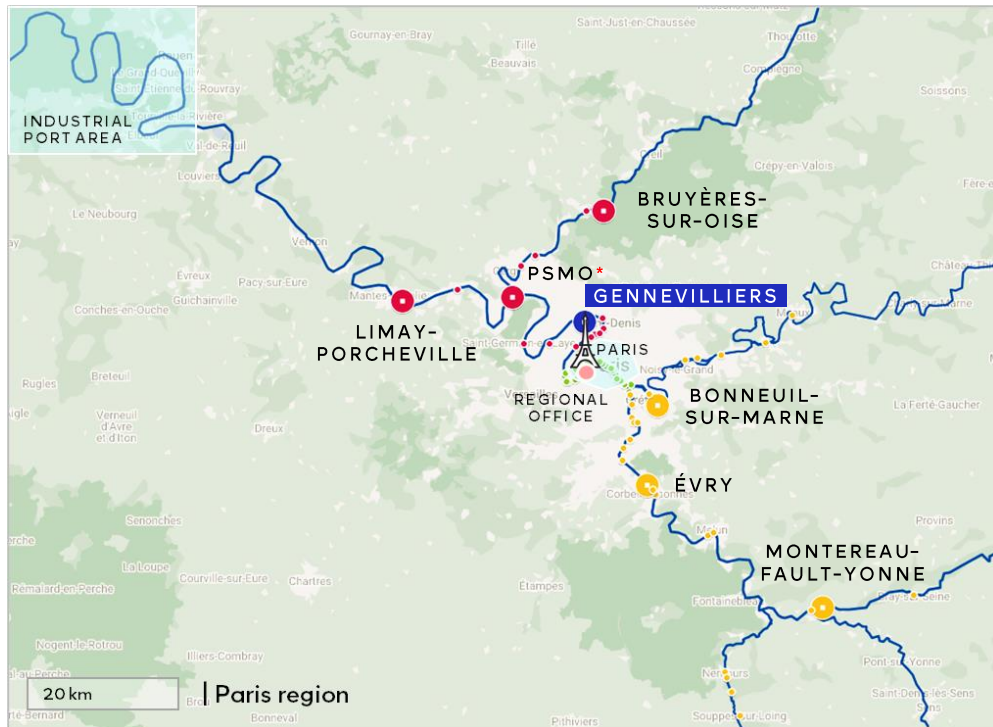
Commune of Gennevilliers

- NEW** Page 29 • Bâtiment C43-C44-C45
- NEW** Page 30 • Bâtiment D3



Bâtiment C43-C44-C45

Surface area	10,530 sqm
Port domain	Yes
Divisible	No
Features	9,840 sqm of warehouse
Nearby	<ul style="list-style-type: none"> A86/A14/A15/A1 motorways Waterway access River container terminal
ICPE regime	1510



Commune of Gennevilliers

HAROPA PORT | Paris



Build program
Logistics



Manager
HAROPA PORT | Paris



Ref. 5788
HAROPA PORT Real Estate

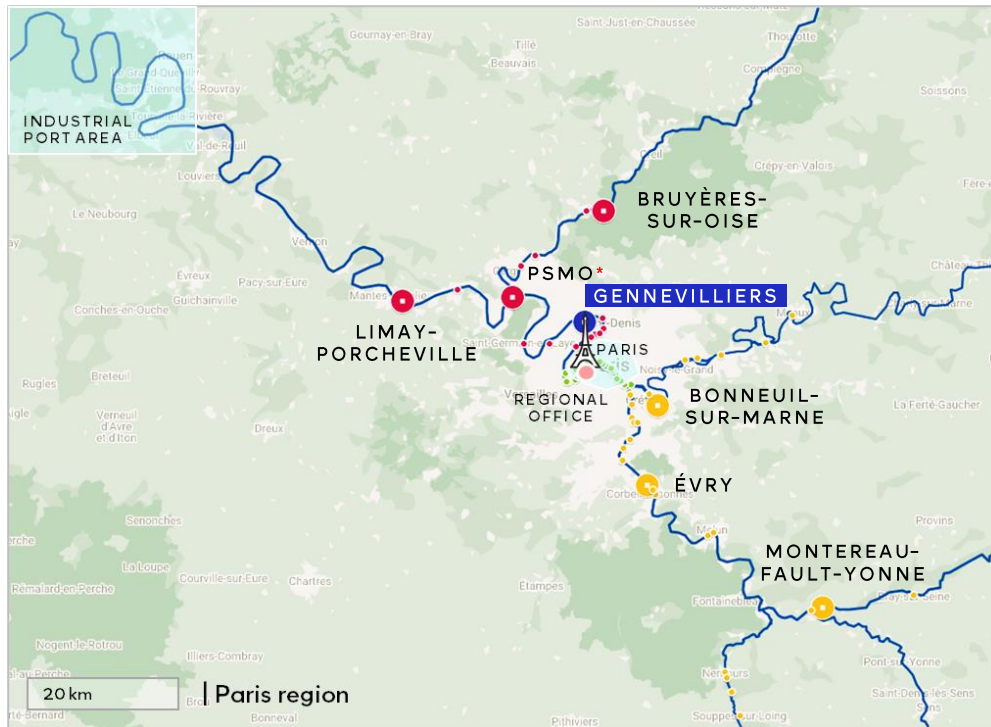
Agence de Gennevilliers

- 1 multimodal platform

*Port Seine-Métropole Ouest
Project to 2030/2040

Bâtiment D3

Surface area	23,610 sqm
Port domain	Yes
Divisible	No
Features	4 units amounting to 20,190 sqm of warehouse
Nearby	<ul style="list-style-type: none"> A86/A14/A15/A1 motorways River container terminal
Connections	Waterway and railway operational
ICPE regime	1510, 2910, 2925



Commune of Gennevilliers

HAROPA PORT | Paris



Build program
Logistics



Manager
HAROPA PORT | Paris



Availability
Q2 2025



Ref. 5790
HAROPA PORT Real Estate

Agence de Gennevilliers

1 multimodal platform

*Port Seine-Métropole Ouest
Project to 2030/2040



Contact

Mr. Florian Maraine
Head of development
Industrial & logistics sectors

By phone
+332 79 18 05 87 / +33 6 61 08 61 22

By mail
florian.maraine@haropaport.com

For further information
On our full range of land and
real estate offers
Real Estate website
realestate.haropaport.com

On HAROPA PORT
Corporate website
www.haropaport.com/en

